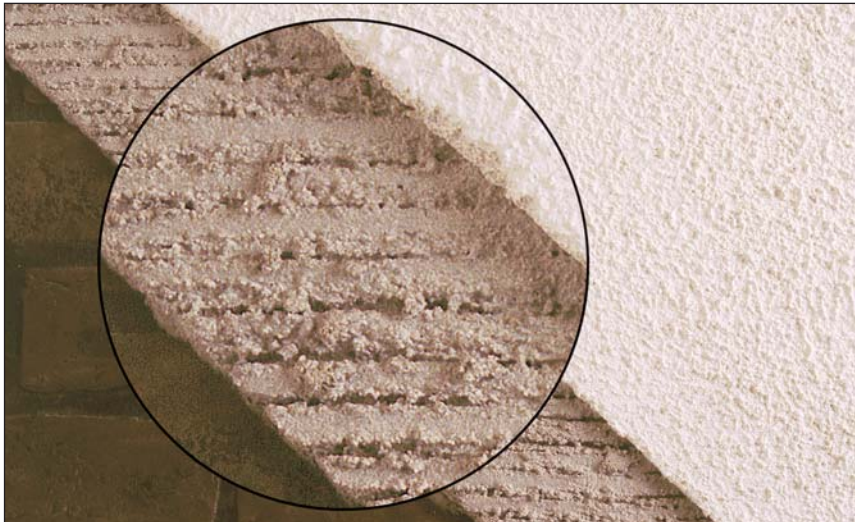


**A polymer-modified dry powder cement-based mortar for use as a render undercoat**

# weberend PUC



**About this product**  
**weberend PUC** is a polymer-modified dry powder cement-based mortar.

## Technical data

1 As a high performance undercoat in 2-coat work onto masonry backgrounds					
2 As part of an external wall system – webertherm XL					
Insulation Board	Reinforcement option	Fixing	1st Coat	2nd Coat	Finish
EPS	Ferritic stainless lath	Mechanical	<b>weberend PUC</b>	<b>weberend TTC</b> or <b>weberend PTC</b>	Dry-dash, or <b>weber PR310</b> and Synthetic finish
PHS MFD PIR				or <b>weberend TTS</b>	Scrape texture
3 As part of a multi-coat render system					
Preparation option	Reinforcement option	Fixing	1st Coat	2nd Coat	Finish
Membrane or <b>weberend stipple</b> or Keyed surface	Ferritic stainless lath	Mechanical	<b>weberend PUC</b>	<b>weberend TTC</b> or <b>weberend PTC</b> or <b>weberend TTS</b>	Dry-dash, or <b>weber PR310</b> and Synthetic texture Scrape texture
	N/A	N/A			

## Uses

- As the first coat in render protected external wall insulation systems, such as **webertherm XL**
- As an undercoat in multi-coat render systems

**weberend PUC** should be scratched horizontally to provide a key for subsequent coats.

When used in strict accordance with manufacturer's instructions and within an appropriate system, **Weber** renders will have a minimum life of 10 years.

## Constraints

The quality of application of this material depends on suitable operative skills and product familiarity.

Restrictions on weather conditions during application and curing must be respected.

Sound trade practices and printed instructions must be followed.

Good access and appropriate protection must be provided.

## Features and benefits

- ▲ Exceptional and consistent quality
- ▲ Bond strength improved
- ▲ Improved water resistance
- ▲ Practical benefits of smooth application, speed, economy and shelf-life
- ▲ Slower curing time in hot weather
- ▲ Technical support from a Quality Assured company
- ▲ Established track record in varying climatic conditions
- ▲ Conforms to BS EN 13914
- ▲ Forms part of an approved insulation system



# weberend PUC

## Mixing

Mix **weberend PUC** mortar by adding clean water only to achieve workability. This mortar can be made up in any batch size desired with little wastage because it is pre-mixed dry. Add no other materials unless directed.

## Application

Apply to prepared surface 10 – 12 mm thick in accordance with BS EN 13914 and thoroughly scratch horizontally to produce key.

Allow to dry and shrink completely before subsequent applications. This will depend on weather conditions, but normally requires a minimum of 36 hours.

### Good practice

Do not apply:

- If frost is forecast within 24 hours of use
- In damp/wet conditions
- In temperatures below 5°C or above 30°C
- On elevations in direct sunlight or where the substrate is hot

## Packaging

**weberend PUC** is packaged in 3-ply 25 kg bags with batch code and description on the side.

## Coverage

Undercoat type	Nominal thickness	Coverage
1st Coat	10 mm	18 kg/m <sup>2</sup>

## Storage and shelf life

When stored unopened in a dry place at temperatures above 5°C, shelf life is 12 months from date of manufacture.

## Health and safety

Contains cement (Contains chromium (VI). May produce an allergic reaction). Harmful by inhalation. Irritating to eyes and skin. Keep out of the reach of children. In case of contact with eyes, rinse immediately with plenty of water and seek medical help. After contact with skin, wash immediately with plenty of soap and water. Wear suitable protective clothing, gloves and eye/face protection.

**For further information, please request the Material Safety Data Sheet for this product.**

### Technical services

**Weber's** Customer Services Department has a team of experienced advisors available to provide on-site advice both at the specification stage and during application. Detailed specifications can be provided for specific projects or more general works. Site visits and on-site demonstrations can be arranged on request.

#### Technical helpline

Tel: 08703 330 070  
e-mail: [technical@netweber.co.uk](mailto:technical@netweber.co.uk)

### Sales enquiries

**Weber** products are distributed throughout the UK through selected stockists and distributors. Please contact the relevant Customer Services Team below for all product orders and enquiries.

#### UK and Ireland

Tel: 08703 330 070  
Fax: 0800 014 2995  
e-mail: [sales@netweber.co.uk](mailto:sales@netweber.co.uk)

#### Saint-Gobain Weber

Dickens House, Enterprise Way, Maulden Road, Flitwick, Bedford MK45 5BY, UK  
Tel: 08703 330 070 Fax: 0800 014 2995 e-mail: [mail@netweber.co.uk](mailto:mail@netweber.co.uk)  
[www.netweber.co.uk](http://www.netweber.co.uk)

To the best of our knowledge and belief, this information is true and accurate, but as conditions of use and any labour involved are beyond our control, the end user must satisfy himself by prior testing that the product is suitable for his specific application, and no responsibility can be accepted, or any warranty given by our Representatives, Agents or Distributors. Products are sold subject to our Standard Conditions of Sale and the end user should ensure that he has consulted our latest literature.